



rlh

HAUPTNER

*Herberholz*

**Horse Breeding  
Horse Diagnostics  
Horse Identification**

Edition no. 1



Since 1857 we have been successfully working in the stock breeding, animal identification and veterinary instruments sectors. With a product range of over 4.500 products, we are a very diverse company acting all over the world. We are especially focused on products for horse breeding and care. As a result we own the following core competencies, which has allowed us more than 150 years success in the markets and enabled us to make the difference to you as our customer:

### **Quality**

Quality has been an essential part of our behaviour since our foundation. „Made in Germany“ is not just a commitment to our roots. Daily, we are trying to fulfil this seal of quality in everything we are doing. Our ISO-certification is one of our proofs for the expectation of quality.

### **Reliability**

Against the background of our long-time existence and our tradition you can see, that today and at that time reliability was and is an implicitness for us. It is an important part of respectful interaction between people.

### **Technology**

Our tradition obliges us as well to straighten our look into the future and to work daily on innovative solutions. In close cooperation with users we are permanently developing new products.



Since September 2001 Hauptner and Herberholz have been certified according to the international guidelines (DIN ISO 9001:2008) and was and will be controlled annually by an external auditor.

### **© H. Hauptner und Richard Herberholz GmbH & Co. KG, Solingen**

All rights reserved. No part of this publication may be reproduced, stored in a retrieval system or transmitted in any form or by any means, electronic, mechanical, photocopying, recording or otherwise without written permission.

# Contents

## Horse Breeding

Clippers and accessories 4-13

Measuring sticks 14-15

Hoof knives 16-17

Hoof instruments 18-20

Mouth gags 21

## Instruments and Diagnostics

Horse dental instrument and tooth forceps 22-23

Castration instruments and emasculators 24-26

Thermometer, reversible stethoscope and specula 27

Instruments for horse therapy and diagnostics 28-33

Ultrasound units and accessories 34-38

Centrifuge 39

## Horse Identification

Transponder 40

Reader 41-43

Conditions of payment and delivery 44

## Blades for horses



**Standard - upper blade 17 teeth, single**

86833.000

**Standard - lower blade 28 teeth, single**

86872.000

cutting height 3 mm



**Post-clipping - upper blade 17 teeth, single**

86833.000

**Post-clipping - lower blade 35 teeth, single**

86842.000

cutting height 3 mm



Blades for Iceland ponies and problematic coat (Cushing)

**Coarse clipping - upper blade 10 teeth, single**

86853.000

**Coarse clipping - lower blade 11 teeth, single**

86852.000

cutting height 3 mm



**Special blade - upper blade 17 teeth, single**

86833.000

**Special blade - lower blade 35 teeth, single**

86842.020

cutting height 2 mm



**Special blade - upper blade 17 teeth, single**

86833.000

**Special blade - lower blade 35 teeth, single**

86844.010

cutting height 1 mm



**Special blade - upper blade 17 teeth, single**

86833.000

**Special blade - lower blade 35 teeth, single**

86845.010

cutting height 1/10 mm

## Electric 2000 PLUS - Horse clipper -

### **NEW:**

- ✓ **modern design in trendy colours!**
- ✓ **extremely quiet motor (approx. 75 dB)**
- ✓ **almost no vibration**
- ✓ **optimised gear system**
- ✓ **more cutting power**

### **Good and approved:**

- high performance motor
- lightweight, approx. 1025 g
- very handy because of ergonomic design
  - > Ø 51-53 mm
  - > 28,5 cm long
- one-hand operation
- overcharge switch
- top quality blades (can be resharpened repeatedly!)



### **Horse clipper**

with standard blades 86833 and 86872  
cutting height 3 mm

purple	89503.110
mint green	89503.220
wine red	89503.330

### **Adjustment of blades on the Electric 2000 PLUS - Cattle and horse clipper -**

- 1) Remove the old blades by unfastening the regulating nut until the screw is screwable and easy to pull out. Then remove the blades. Please pay attention to the regulating nut, that it does not loosen the screw to avoid the loss of individual parts.
- 2) Take a brush for cleaning the clipping head carefully.
- 3) Adjust the eccentric block in such a way, so that it is possible to put in the guide of the upper blade easily. Please make sure, that the surface of the blades is totally clean.
- 4) Put in the lower blade and adjust the screw, so that the screw can hold the blades.
- 5) Turn the regulating nut until you recognise the first resistance and afterwards again 1 1/4 of a turn (please see the marking on the regulating nut)
  - > The clipper is now ready to use! It is also important to oil the blades during the clipping process several times in switched-on mode.

**Each horse clipper will always be delivered completely including blades, oiler and instruction book in a strong carrying case.**

## Electric 2000 PLUS - Spare parts - for the horse clipper -



**Complete head for clipper, black**  
with blades for horses 86872 and 86833

89503.600

**Note:**

The heads for the clippers for horses are no longer interchangeable with the heads of the sheep shearing machines!



**Oil**

120 ml bottle

89500.650



**Oil**

1 litre canister

87500.000



**Brush**

strong and large, for cleaning the blades

89410.000

strong and small, for cleaning the blades

89600.410

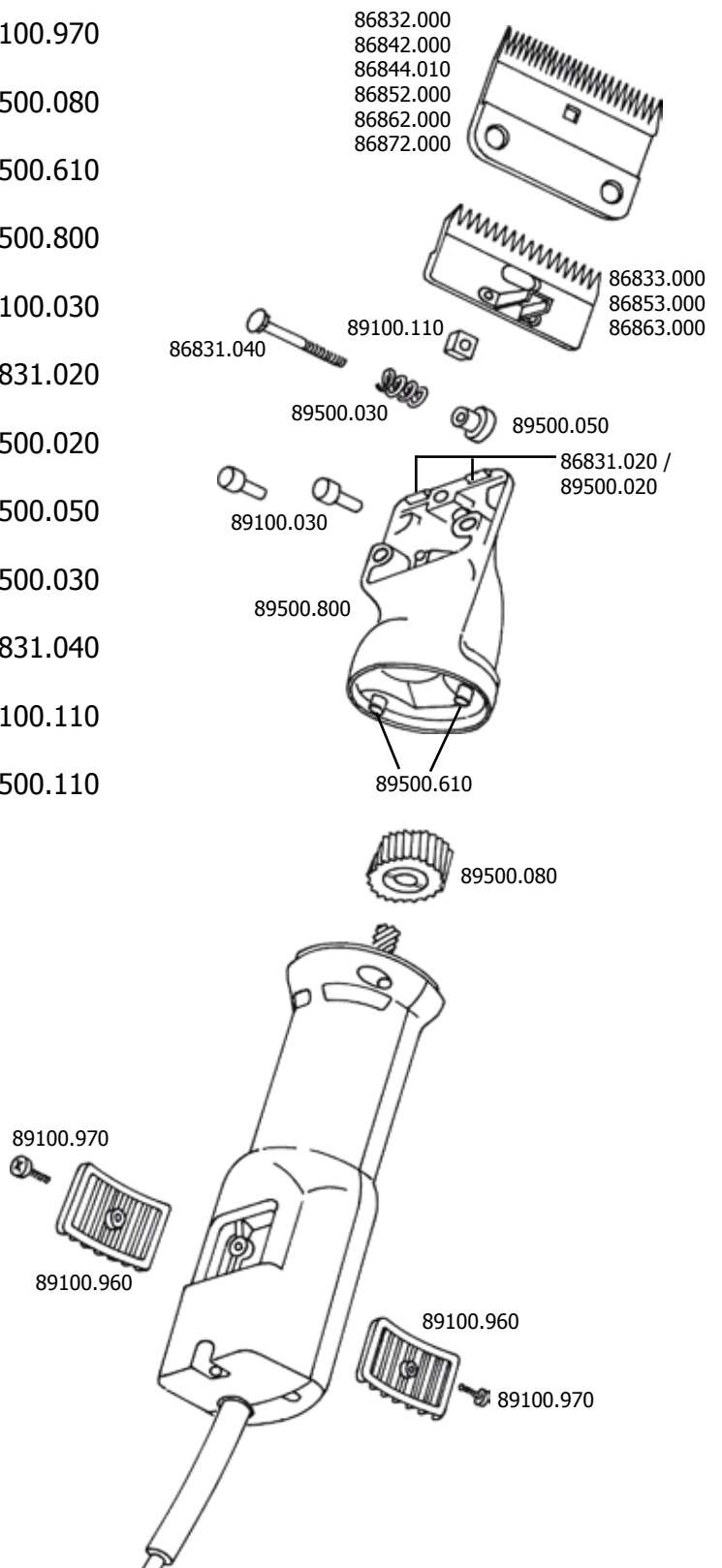
**Repairing and sharpening:**

If your cattle or horse clipper or your sheep shearing machine should be repaired or the blades have to be resharpened, please send us your clipper/shearing machine or just the blades. Add a small note describing which part has to be repaired or which irregularities you have noticed and we will do this work for you! If you would like to get an estimation of costs, please note this as well as your contact details, like address and telephone number! Our address is as follows:

**H. Hauptner und Richard Herberholz GmbH und Co. KG, Kuller Str. 38-44, 42651 Solingen**

## Spare parts

<b>Screen filter</b>	89100.960
<b>Screw</b>	89100.970
<b>Toothed wheel M / Steel hub</b>	89500.080
<b>Set of screws and washers</b>	89500.610
<b>Shearing head complete, without blades</b>	89500.800
<b>Lower comb guide</b>	89100.030
<b>Spare profile unit</b>	86831.020
<b>Spiral clamping pin to 86831.020</b>	89500.020
<b>Regulating nut</b>	89500.050
<b>Compression spring</b>	89500.030
<b>Guide screw</b>	89500.030
<b>Eccentric block</b>	86831.040
<b>Eccentric block, 5 pieces</b>	89100.110
	89500.110



## andis **animal clipper**

### andis „model AGC“ with motor in the handle



- professional animal clipper with universally usable blades
- conceived for professional use
- also usable for sanitary preparation
- powerful motor designed for heavy-duty use and long life
- extremely cool and quiet operation - noisy fan and air vents are not needed
- detachable blades for easy changing and cleaning
- maintenance free - no oiling or greasing of internal parts is needed
- this system includes: clipper, blade set (upper and lower blade) (88422), clipper oil and instructions

88400.000



### andis „model AGR+“ with rechargeable battery

- equipped with a unique charging system that charges battery to maximum performance every time
- no overcharge possible
- clipper will run continuously for one hour with a fully charged battery pack
- charging time is also one hour or shorter
- battery pack can be recharged separately from clipper
- detachable blades for easy changing and cleaning
- this system includes: rechargeable clipper, blade set (upper and lower blade) (88422), clipper oil and instructions (see picture below)
- 40 watt

88410.000



### **Battery pack** for „Model AGR +“

88450.000

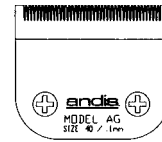


## andis **Blades for animal clippers**

### **Surgical cut, very close cutting**

cutting height 0,25 mm / 1/100", size 40

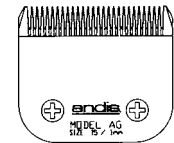
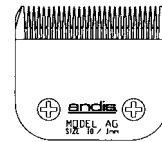
88420.000



### **Medium cut**

cutting height 1,2 mm / 3/64", size 15

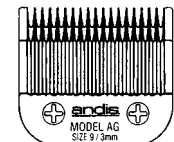
88421.000



### **Medium cut, very close cutting**

cutting height 1,5 mm / 1/16", size 10

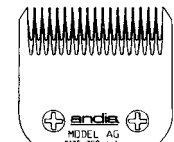
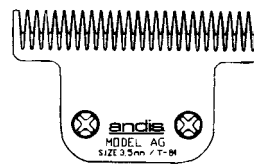
88422.000



### **Medium cut**

cutting height 2 mm / 5/64", size 9

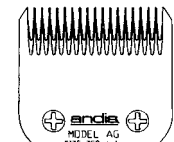
88425.000



### **Extra wide medium cut**

cutting height 2,4 mm / 3/32", size T84

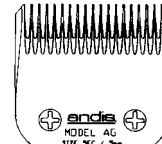
88429.000



### **Finish cut**

cutting height 3,2 mm / 1/8", size 7

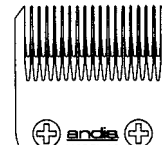
88430.000



### **Finish cut**

cutting height 6,3 mm / 1/4", size 5

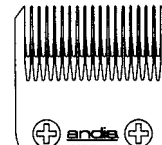
88431.000



### **Finish cut**

cutting height 9,5 mm / 3/8", size 4

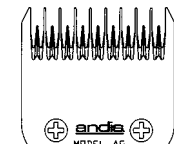
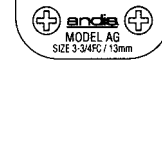
88432.000



### **Finish cut**

cutting height 13 mm / 1/2", size 3

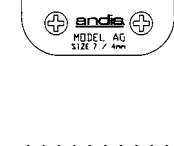
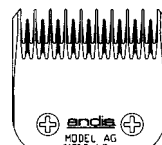
88433.000



### **Skip tooth**

cutting height 3,2 mm / 1/8", size 7

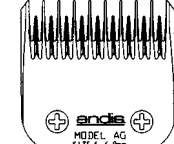
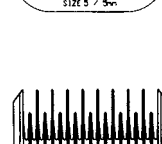
88440.000



### **Skip tooth**

cutting height 6,3 mm / 1/4", size 5

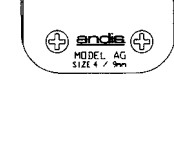
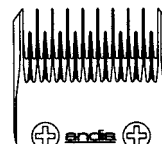
88441.000



### **Skip tooth**

cutting height 9,5 mm / 3/8", size 4

88442.000



### **Finish cut**

cutting height 13 mm / 1/2", size 3

88443.000

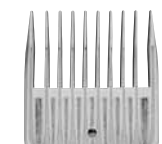
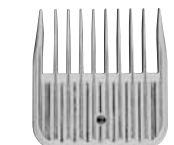


### **Set of 4 pieces snap on combs**

available for 8422,

size approx. 3 mm, 6 mm, 9 mm and 13 mm

88449.000



## Hand clippers for horses



**Clipper, with extra long teeth**  
cutting width approx. 45 mm, for sheep

85250.000

upper blade

85250.010

lower blade

85250.020

screw

85250.040



**Clipper „Hauptner-Perfect“, coarse blades**

approx. 3 mm cutting height, cutting width 53 mm

85280.000

upper blade

85280.010

lower blade

85280.020



**Clipper, extra fine toothed**

approx. 3 mm cutting height, cutting width 55 mm

85370.000

upper blade

85280.010

lower blade

85370.020



**Clipper, fine toothed**

approx. 2 mm cutting height, cutting width 45 mm

85380.000

upper blade

85380.010

lower blade

85380.020



**Manual clipper „Lilliput“**

with thumb backing, particularly for head and fetlock clipping, cutting width 25 mm, for dogs

85392.000

upper blade

85392.030

lower blade

85392.040



**Manual clipper „Lilliput“**

with thumb backing, particularly for head and fetlock clipping, cutting width 30 mm, for dogs

85393.000

upper blade

85392.030

lower blade

85393.040



**Fetlock scissors**

strong model, forged, 18 cm, for horses

85200.000

## Hair scissors

Our hair scissors are made only of high quality, ice-tempered, stainless steel marked Solingen

### **Hair scissors, extra fine tothing on one side**

curved, 19 cm, stainless

72321.000



### **Hair scissors, extra fine tothing on one side**

curved, 16,5 cm, stainless

72324.000



### **Hair scissors, extra fine tothing on one side**

curved, 16,5 cm, with rounded tips, nickel-plated

72327.000



### **Hair scissors, extra fine tothing on one side**

straight, 19 cm, stainless

72322.000



### **Hair scissors, extra fine tothing on one side**

straight, 16,5 cm, stainless

72325.000



### **Hair scissors, extra fine tothing on one side**

straight, 21 cm, with finger hook, stainless

72326.000



### **Thinning scissors**

straight, 25 teeth, 16 cm, nickel-plated, tothing on both sides

72330.000



### **Thinning scissors**

straight, 25 teeth, 16 cm, nickel-plated, tothing on one side

72331.000



## Curry combs and brushes



### **Curry comb - Coat King**

for detangling, dematting and trimming, for horses, extra fine, for all normally coated horses, 1,5 mm gap, 60 special blades

68290.000



### **Curry comb - Coat King**

for detangling, dematting and trimming, for horses, medium, for very heavy coated horses like Iceland ponies, 3,5 mm gap, 30 special blades

68291.000



### **Curry comb for horses and cattle**

with wooden handle, in 8 rows, metal, 10 x 11,5 cm

68301.000



### **Curry comb for horses**

with wooden handle, in 8 rows, metal, 10 x 11,5 cm

68305.000



### **Curry comb**

with plastic handle, tooting on both sides, head revolving about 180°, bilaterally usable and flexible, 10,5 x 23 cm

68306.000



### **Curry comb for horses**

with plastic handle, 12,5 x 17 cm

68340.000

## Curry comb

plastic material, with 3 toothing rows, wave shaped, adjustable hand loop, 10 x 16,5 cm

68303.000



## Curry comb

plastic material, with adjustable hand loop, 10 x 25 cm

68307.000



## Curry comb

with horsehair (mixed), 21,5 x 10 cm

68313.000



## Mane combs

### Mane comb

aluminium, 13 teeth, 11 x 5,5 cm

68260.000



### Mane comb

simple pattern, 24 teeth, 21,5 x 4,8 cm

68482.000



### Mane trimming knife

with wooden handle, fold-up design, blade 8 cm long, nickel-plated, total length 19 cm

68511.000



### Sweat scraper

with wooden handle, brass sheet and rubber lip, 20 x 22 cm

68320.000



### Sweat scraper

with flexible, toothed metal sheet, one hand or two hands usable, 69 cm

68321.000



## Measuring sticks

- made of brass and nickel-plated
- hand-made and extremely long-lasting
- individually tested quality
- easy handling
- maintenance free - by correct handling
- complete with instruction



### **Measuring stick**

for horses, walking stick shaped, max. height 180 cm, included the extension piece 10 cm (70190.300), weight 1,3 kg

Measuring range:

height: 96 - max. 180 cm (incl. extension piece)

length: 94 - 168 cm

width: 7 - 80 cm

70190.000

### **Measuring legs**

- For measuring the height of the withers we only need the upper measuring leg. By spreading the measuring stick the measuring leg becomes visible at the inner side of the square stick. It can be easily drawn out and opened upwardly to such an extent that it is locked in place.

When we draw out the measuring stick further, the second measuring leg becomes visible directly below the first measuring leg. For taking out the second measuring leg, the measuring stick must be drawn to such an extent that the measuring leg is completely free. Now it has to be pushed a little in an upward direction, so that it is released from the support. Then the measuring leg is inserted in the appropriate reception support at the upper round end of the measuring stick, and is screwed tight.

### **Measurement of height**

- Accurate results of measurement are only to be attained in vertical position of the measuring stick. When measurements are made on soft subsoil the point at the end of the measuring stick gets approx. 1,5 cm deep into the soil. However, this has already been taken into account and has no importance. When measurements are made on hard subsoil where the point cannot dip in, it should be taken into account that we must add 1,5 cm to the measurement that we have made.

### **Extension piece**

- Before the enclosed extension piece can be screwed on the measuring stick, the point at the end of the measuring stick has to be removed and screwed on the extension piece. In all measurements we have to take into account that we must add 10 cm to the determined value, when measuring on soft subsoil, and 11,5 cm when measuring on hard subsoil.

### **Measurement of lengths and breadths**

- For the determination of measurements of lengths and breadths there are special scales on the square rod of the measuring stick from which we can read the appropriate values.

## Measuring stick

for horses and cattle, for measuring the withers height, measuring leg can be folded away into the stick, weight 1,6 kg, height 105 - 190 cm, nickel-plated

70195.000

The height of a horse can be determined with a measuring stick. The measuring stick should be put on the base of the neck (at the highest point of the back - withers). The measuring would be from the bottom to the withers. With this height you will get the hands high.



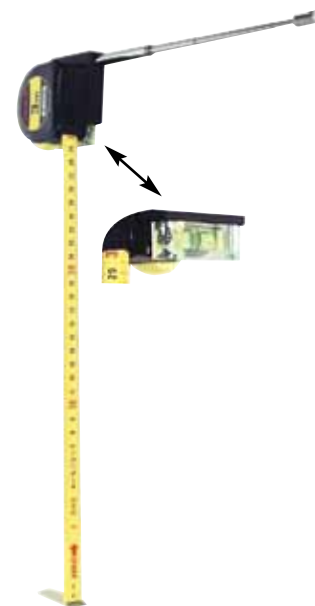
## Measuring tape

### Measuring tape

in strong metal pocket case, for measuring the height and width, for all kinds of animals, with water-level and telescopic measuring arm, measuring between 8 - 300 cm, weight 220 g

70300.000

Measuring tapes can be used to estimate the weight of pigs and cattle by measuring the girth.



## Nose holder

### Wooden nose twitch

with strong rope, 21 cm

02800.000



## Hoof knives

Manual work with the following quality control guarantees a good product!

- ✓ guarantees an optimal grip and load transmission because of an ergonomic shaped wooden handle
- ✓ we use only high-quality German steel
- ✓ long lasting cutting output
- ✓ accurate manufacturing
- ✓ strict quality control during the whole manufacturing process
- ✓ excellent product reliability because of decades of experience and the optimal proportion of hardness / flexibility and the material viscosity
- ✓ optimal price performance ratio



### **Hoof knife, 65 mm cutting length**

right, with untreated beech wood handle

40590.000



left, with untreated beech wood handle

40591.000



### **Hoof knife, 65 mm cutting length**

right, with bubinga hardwood handle and wide blade

40602.000



left, with bubinga hardwood handle and wide blade

40603.000



### **Hoof knife, 55 mm cutting length**

right, with bubinga hardwood handle for small horses and ponies

40605.000



left, with bubinga hardwood handle for small horses and ponies

40606.000



### **Hoof knife, 70 mm cutting length**

right, with curved blade, for cattle, stainless, with untreated beech wood handle

40625.000



left, with curved blade, for cattle, stainless, with untreated beech wood handle

40626.000



### **Hoof knife, 65 mm cutting length**

right, with black stained beech wood handle and thin blade, nickel-plated

40641.000



left, with black stained beech wood handle and thin blade, nickel-plated

40642.000



### **Hoof knife, 55 mm cutting length**

right, crescent-shaped, with untreated beech wood handle

40622.000



left, crescent-shaped, with untreated beech wood handle

40623.000



## Hoof knives

### **Hoof knife, 55 mm cutting length**

right, with bubinga hardwood handle and thin blade, for exact cut-out

40647.000

left, with bubinga hardwood handle and thin blade, for exact cut-out

40648.000

### **Hoof knife, 70 mm cutting length**

right, with bubinga hardwood handle and wide blade with double cutting edge

40671.000

left, with bubinga hardwood handle and wide blade with double cutting edge

40672.000

### **Hoof knife, 70 mm cutting length**

right, with ergonomic beech wood handle, stainless

40620.000

left, with ergonomic beech wood handle, stainless

40621.000

### **Hoof knife, 55 mm cutting length**

Hauptner Professional, right, with brown and hand shape adapted beech wood handle, this allows very safe working, thin blade

40607.000

Hauptner Professional, left, with brown and hand shape adapted beech wood handle, this allows very safe working, thin blade

40608.000



### **NEW: Extra sharp hoof knives!**

- ✓ improved technology of the cutting edge
- ✓ revolutionary geometry of the handle
- ✓ special thumb support for an ergonomic handling

### **Hoof knife, extra sharp, 55 mm cutting length**

right, with bubinga hardwood handle, wide blade

40600.000

left, with bubinga hardwood handle, wide blade

40601.000

### **Hoof knife, extra sharp, 55 mm cutting length**

right, with bubinga hardwood handle, thin blade

40643.000

left, with bubinga hardwood handle, thin blade

40644.000

## Hoof instruments



### **Hoof knife set**

in leather case, with 5 interchangeable blades, 1 sage knife, 2 drawing knives, 1 searcher, 1 hoof knife left, with spring fastening  
- all blades are nickel-plated -

41280.000

## For easy sharpening of hoof knives

### **Sharpening stone**

15 cm, 3,7 cm wide, Ø 0,1 - 0,7 cm, simple model

41080.000

15 cm, 3,7 cm wide, Ø 0,1 - 0,7 cm, superior quality

41081.000



### **SWISS Sharpener**

for all knives, scissors, etc.

49035.000



### **Pocket sharpening-steel**

useful pocket sharpening-steel, small and easy to carry with you, easy to assemble, 11,2 cm long, screwed together 18,5 cm long

49037.000

## Hoof rasps

### **Hoof rasp**

straight, with coarse and fine surface, usable on both sides, 4 cm wide, 35 cm long, thickness approx.: 9 mm

42512.000



### **Hoof rasp**

S-shaped, with coarse and fine surface, 30 cm long, 2,5 cm wide

42794.000



### **Hoof rasp**

with handle made of plastic, coarse surface, hand made, 4 cm wide, operating length: 30 cm, thickness approx.: 6,5 mm

42516.000



with wooden handle, coarse surface, hand made, 4 cm wide, operating length: 20 cm, thickness approx.: 6,5 mm

42517.000



### **Farrier's set**

in case, containing: Hoof hammer 42371, Buffer 42440, Farrier's forceps 42461, Hoof rasp 42512, Hoof knife 40605, Hoof scraper 40831

42530.000



## Hoof instruments

### Hoof tester

with straight shanks, jaw 15 cm, 37 cm, stainless

40450.000



### Hoof tester „model vienna“

jaw approx. 20 cm, 40 cm, stainless

40470.000



### Wooden hoof hammer

made of hardwood, 8 cm Ø, 29 cm

40841.000



### Hoof hammer

30 cm

42371.000



### Hoof scratch brush

made of plastic, with plastic bristles, 17 cm

68104.000



### Hoof shoe

for horses, made of hard-wearing and durable plastic (Polyurethane), black, can be used several times

- all shoes complete with lace and bandage -

130 x 130 mm, for medium horses

42743.500

145 x 145 mm, for large horses

42746.500

160 x 155 mm, for very large horses

42748.000



### Insulation tape

on tissue base, double adhesive, for securing hoof treatments

42796.000



### Beech tree tar

1 kg

42567.000





## Hoof instruments

### **Claw and hoof cutter**

with multiple action and interchangeable blades, 42 cm  
42683.000

### **Spare blades, pair**

42683.092

### **Spare screw**

42683.100



### **Farrier nipper**

30 cm  
42461.000



### **Combination shoe puller-spreader**

with button shaped endings of the handles for a better differentiation  
- the outer grooves of the head of the pliers are for spreading the horse shoe - the pliers can also be used for cutting nails, forged, 35,5 cm long

42465.000



### **Crease nail puller**

- an essential tool for the removal of misdriven nails from new shoes - forged, 30,5 cm long

42467.000



### **Saddle horse clincher**

for use on larger nails in saddle horse hooves, 30 cm long  
42486.000



### **Farrier nipper**

for the removal of edges, forged, 38 cm long  
42680.000

## **Hoof treatment**

Because of the lack of hoof treatments, there can be serious diseases. This can be seen through a general worsening of the general state of health of the animal. In many cases, the veterinarian has to perform a surgical intervention to avoid any further unhealthy consequences. Furthermore, the health of the animal has to be reconditioned as to does the performance of the animal. With the instruments of the previous pages, the normal hoof treatment can be realised. It is important to shorten hooves, which have grown too long. Otherwise there can be damage caused to the musculoskeletal system of the animal.

## Mouth gags

### **Mouth gags**

Mouth gags can be used for dental treatments, feeding of medications and general examinations and surgery. It is helpful to open and fix the mouth of the animal, to make examinations or operations without any difficulties. With the mouth gags you have a better overview in the mouth and it is easier to feed medications, because the animal cannot close the mouth.

### **Schulze's mouth gag**

for horses and cattle, 35 cm, nickel-plated

03110.000



### **Schoupé's mouth gag**

for horses, 27 cm, stainless

03111.000



### **Climax-Hausmann's mouth gag**

for horses, with nylon straps

03112.000



### **Bayer's wedge**

for horses and cattle, max. height 7 cm, nickel-plated

03690.000



## Horse dental instrument



Because of the cooperation and experience of horse dental practitioner and skilled toolmaker we continuously develop our tools and optimise them. For producing our equipment we use ultramodern CNC-machine-tools guaranteeing highest precision and quality. Choosing the material from which our products are made is a very important issue for us: We only use high-alloyed stainless steel which meet the requirements for the intended use.

**Quality - Made in Germany!**

### **Horse dental instrument**

The horse dental instrument is in various types available and for this reason you can choose the right adaption following your individual needs. The dental instrument sets are in a solid tool case including inlay. The set contains a driving motor with Bernstein foot switch. There is a wide range of different handpieces:

- teeth-grinding-disc with different diameters and it is available with and without cooling pipe
- dental grinding machine-Applecore with and without water cooling in various types
- different tooth burrs, as well with and without water cooling available, e.g. Diastema-burr, burr for tartar and diamond milling-tool
- various fraises also with cooling available
- carbide burr
- different models of diamond cut wheels with different diameters

**Take your benefit with these dental instruments which are developed with practical experience and find the right tool for every case of dental treatment! These dental instruments facilitate the daily work and moreover they contribute to the well-being of the horse!**

**We would be pleased to send you an individual offer!**

## Tooth forceps

**These high-quality tooth forceps made of stainless steel could be used for any dental treatment, because of their various models! We would be pleased to make an individual offer for your needs.**

### **Serrated extracting forceps**

These extracting forceps are useful for removing tooth caps or smaller and loose back teeth. Tooth caps are the rest of milk teeth, which are going to be troubled by the new coming teeth from underneath. These forceps is serrated for holding the tooth safe. The concave model is especially made for fragile and insecure back teeth in the upper and lower jaw, because of its big contact area.



### **Fragment forceps gooseneck**

Dumped parts of teeth can be grabbed and extracted with these forceps. Long back teeth in young horses can be turned to the side after extraction for getting them in one piece out of the alveole and removing them completely.



### **Interdental spreader 3 mm and 6 mm**

Slim spreader for small space available at ponies and donkeys. For large horses it is usable for spreading the 10th and 11th back tooth. It is helpful if there is just little space available.



### **Mesial spreader 3 mm**

This new design of spreader enables access onto the interdental gap. Especially useful in case of displaced or fractured teeth within the mesial interdental gap.



### **Fragment forceps**

These forceps is available in different sizes and especially useful for the extraction of very small fragments and the root of teeth.



### **Extractor forceps**

Herewith the special treatment of the 06th back tooth in the upper jaw is possible. These forceps is with and without leverage space available. The leverage space can be put on the 07th back tooth with the help of the extension. The four claws guarantee a fixed fit with minimum three claws on the tooth.

### **4 root extractor forceps**

These forceps is especially made for the extraction, where only small place is available particularly for ponies and donkeys. For big horses it is also usable for the extraction of the 10th and 11th back tooth because it needs less space than big spreaders. The forceps is also usable for the extraction of milk caps and geriatric teeth.

### **Stable fragment forceps**

In the case of short or fractured crowns, these forceps can achieve a safe hold at the tooth.



## Serra-emasculator

- ✓ best quality and manufacturing
- ✓ made of durable high quality steel with nickel- and chromium plating
- ✓ each Serra-emasculator is individually controlled and set regarding cutting and squeezing to minimise the risk of haemorrhage



### **Serra-emasculator**

approx. 36 cm, the emasculator avoids the sliding of the cord and the sperm cord is caught, enables holding, squeezing and cutting in one movement, the danger of haemorrhage is reduced to a minimum

38320.000

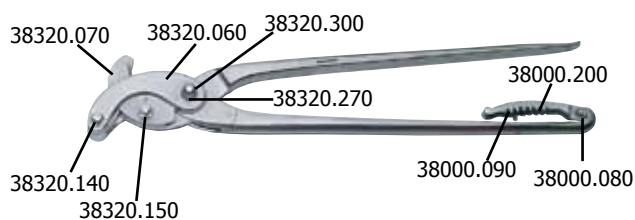
### **Stallion castration**

The equitation is getting more and more important and also even more complex in the last years. Many of the stallions are castrated. By making the castration the temperament of the horses is getting better under control and it is easier to instruct and ride them. Generally the castration has to be made under anaesthetic, which means that it also has to be made by a veterinarian. In general the horses could be castrated at the age of 1 1/2 years.

By using a Serra-emasculator for a castration, firstly the scrotum has to be tighten and then there has to be made a vertical cut. This cut enables that the scrotum itself can be taken out. It has to be turned 3-4 times, so that the spermatic cord gets under tension. Now the Serra-emasculator 38320.000 has to be positioned with the even side to the body. While closing the pliers, the spermatic cord will be automatically directed into the middle of the pliers (caused by the shape of the knife) and the spermatic cord will be squeezed several times by the upper part of the pliers. In a final step the knife of the pliers acts on the scrotum and cuts off the spermatic cord. The Serra-emasculator is equipped with a ratchet in which the other shank perfectly fits in. This means that the emasculator stays automatically closed and also should hold like this for a minute. The right way of using the Serra-emasculator avoids secondary haemorrhage of the spermatic cord. Afterwards the second scrotum can be set down in the same way.

### **Spare parts**

cutting piece	38320.070
screw for the large bow 8,0	38320.140
screw for blade	38320.150
small bow 8,0	38320.060
nut	38320.270
wing screw	38000.090
spring for ratchet	38000.080
ratchet with pin	38000.200
tension screw with pin 8,0	38320.300
squeezing part with pin 8,0	38320.320
large bow complete 8,0	38320.330



**Please note, that every repair or replacement of spare parts made on your own is a certain risk, because in general an individual adjustment to the emasculator is necessary.**



## Serra-emasculator

### Serra-emasculator

modified with curved handles for castration of the standing stallion, without ratchet, approx. 35 cm

38321.000



#### Advice for disinfection of the Serra emasculator

New instruments have to be cleaned prior to the first use or first sterilisation. Protection caps or folios have to be completely removed if any. Emasculators have to be dismantled after using them with the attached wrenches. Shanks and head have to be dismantled into single parts. Attention please: Notice the correct way in which to assemble and follow this method. All screws have to be hand-tight. Our emasculators can be sterilised with hot air or autoclave. They are made of rigid carbon steel with nickel-chromium-plating. Leave in disinfecting liquid for a maximum of 15 minutes, rinse it and dry it well. Please follow the manufacturer's user instructions on whichever steriliser you choose to use. All other instruments in the sterilisers must be clean and there should be no trace of dirt in the sterilisation chamber because corrosion can be transferred to other instruments. After use contaminated instruments should be prepared for sterilisation as soon as possible. In case of mechanised cleaning avoid cleaning shadows. Instruments which come apart must be taken apart and placed into the chamber individually. If there is any dried dirt like blood etc. clean it with Ultrasound-cleaner according to the manual of the manufacturer.

Important: Store it in dry and clean conditions. Do not store in stables. All instruments have to be well dried after sterilisation.

Some Vaseline for the joints can be used. Put just some parafin-oil on to the joints prior to next use, in case of the Serras put it on to the central screw joint so that it can be moved easily.

## Reimers' emasculator

### Reimers' emasculator

enables the operator to cut and squeeze, 30 cm.

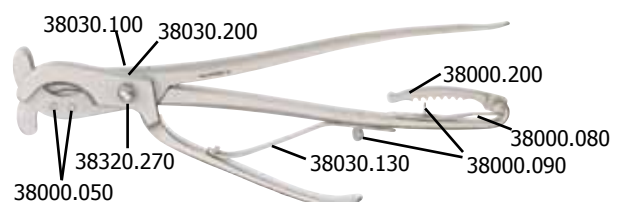
This emasculator works in the same way as the Serra-emasculator. The difference between these two models is the additional cutting shank at the Reimers' model. This cutting shank will be used in the last work step, which means after closing the emasculator for a minute. By using this cutting shank the scrotum will be cut off and afterwards it will drop down.

38030.000



### Spare parts

center bolt	38000.050
tension screw with pin	38030.200
spring for ratchet	38000.080
wing screw	38000.090
washer with square hole	38030.100
spring (leaf)	38030.130
nut	38320.270
ratchet with pin	38000.200



## Castration instruments



### **Emasculator Masch's model**

produces a double squeezing, approx. 32 cm

38000.000

### **Spare parts**

screw / head clamping

38000.040

centre bolt

38000.050

spring for ratchet

38000.080

wing screw

38000.090

ratchet with pin

38000.200



## Emasculators

Some veterinarians are also using emasculators, when the horse is lying. If you work with emasculators the scrotum has also to be opened. Afterwards you put the spermatic cord into the emasculator and close it. In this step the pliers has to be positioned with the even side to the body. Because of the striation on the upper side of the emasculator the spermatic cord will be pressed together (approx. 1 min.). At the same time the scrotum will be cut off by the sharp side and afterwards it drops down. The second step is to do the same procedure also with the second scrotum.



### **Emasculator Hausmann's model**

for heavy horses, 36 cm long, nickel-chrome-plated

38210.000



### **Emasculator Hausmann's model**

for horses, also suitable for castration, 27 cm long, nickel-chrome-plated

38230.000

## Berlin casting hobble

For the castration of a horse you can use the Berlin casting hobble after giving a sedation injection. In this process you have to put one hobble of the Berlin casting hobble at each pastern of the horse. Afterwards the rope with chain, which is connected with the main hobble has to be put through all four rings. Then the legs could be brought together by pulling on the rope. By bringing the legs close together, the horse has no stable standing anymore and has to be put on one side. Then the main sedation can be injected. As soon as the horse is sleeping, the hind leg which is on the upper side can be released of the hobble and tied away with the tension rope. Because of the backwards pulling of the leg, the veterinarian has an open field of work.



### **Berlin casting hobble**

also for smaller horses, consisting of: 1 main hobble and 3 hobbles, 3 m strong rope, 1,25 m chain (black powder-coated) and spring hooks

03910.000

### **Spare hobble**

for casting hobbles 03910, single

03930.000

## Thermometer

### **Digital thermometer SC 12**

especially for cattle, horses and pigs, long temperature sensor, quick temperature measurement, waterproof, can be disinfected, measurement period: 15-25 sec.

00196.000



## Stethoscope

### **Reversible stethoscope**

(as Rappaport) with rubber tubing 80 cm, with massive metal head, membranes 45 mm Ø and 30 mm Ø, strong quality, weight 218 g, for small and large animals

01270.800



**...you will find further stethoscopes in our catalogue and on our website!**

## Vaginal specula

made of plexiglas, not heat-sterilisable

### **Vaginal speculum for mares**

420 x 50 mm

42961.040



made of plexiglas, with lightening, not heat-sterilisable

### **Vaginal speculum for mares**

420 x 50 mm

42971.000

Replacement plexiglas-speculum

42971.040



## Softlaser therapy

### **Laser therapy and laser acupuncture for the professional use in the veterinarian sector**



In the field of alternative medicine the so called Softlaser is getting more and more popular. The user of the Low-Level-Lasertherapy (LLLT) prove its regeneration-stimulating and anti-inflammatory effect. These days the laser therapy is successfully used for horses.

With the use of the soft laser therapy you will particularly stimulate the metabolism and also influence many other cell processes. This therapy only works with laser diodes of the red and near to the infrared spectral range.

#### **Application area of the soft laser therapy:**

- tissue
- muscles
- post-treatment of wounds causing by operations
- cicatrice treatment
- inflammations
- regeneration of bones
- joints

You can treat certain areas which are painful or only punctual parts of the body. If these points are lying on the meridians you can call this treatment laser acupuncture. A detailed map of these acupuncture points at the body of a horse will be included in delivery.



#### **Advantages of the laser therapy:**

- no side effects and a completely painless treatment
- no infection possible, avoiding inflammations because of increasing the blood circulation
- no known incompatibilities
- improvement of the cell metabolism, cell defence and cell respiration
- stimulation of the immune system

The control block has an impact case to prevent humidity, which is also impact-resistant. The control block and the laser module are connected with a flexible and spiral cable. The soft laser device will be delivered in a comfortable carrying-bag. We highly recommend to wear safety glasses while using the soft laser device.

## **Softlaser shower**

**Softlaser shower for the veterinary treatment, especially developed for laser physiotherapy sessions.**

This laser shower has nine infrared laser diodes, which are placed in the housing. The infrared laser light can reach the skin through a closed and optical transparent plastic comb. This construction enables to transport the pathological focus through the coat without any loss.



### **Technical features:**

- irradiated area: 20 cm<sup>2</sup>
- number of laser: 9 parts
- performance: 90 mW
- laser-wavelength: 830 nm
- power supply: integrated rechargeable battery
- timer: 5 minutes
- weight: less than 200 g

The laser therapy - a painless, not invasive and modern way to treat various diseases and injuries. The positive effects result of the decongestant, analgesic and stimulating impact of soft laser treatment on biological tissue through microcirculation.

It has a comfortable and ergonomic housing, battery-supplied, integrated timer and an optimal synchronised performance characteristics. It offers a high clinical effectiveness and an easy and certain method for the physical therapy.

The soft laser shower reduces symptoms of pain without any pharmaceuticals. The soft laser shower represents a real help to free horses from pain.

**Please visit our website**

**[www.hauptner-herberholz.de](http://www.hauptner-herberholz.de)**

## Ultrasound-inhaler

**Innovative technique for the optimal treatment of the respiratory ducts!**



### **Ultrasound-inhaler**

This ultrasound-inhaler is setting new trends now because this inhaler was especially developed for horses. The latest technical acquisitions were considered. This is no modified human medicine product. It provides safe and low-noise operation. We recommend a duration of approximately 15-20 minutes per inhalation. Acute illness should be twice a day. Prevention is better than cure, so inhalation is not only for sick horses. Of course the ultrasound-inhaler helps prophylaxis, recovery and coachwork as well.

Respiratory diseases appear to represent the second most frequently form of internal diseases with horses beside colics. Especially in the cold season an increased coughing and snorting can be heard in the barn. The reasons for equine cough can vary from poor feed quality over dust allergy to viral infections. Ultrasonic inhalation appears to be the one and only effective method for treatment of respiratory diseases. The active medicines will be atomized so finely that not only the bronchial tubes are achieved but as well the further ramifications up to the alveoli. This has been proven clearly by numerous studies! The advantages of this method against conventional applications is that the medicines attain their destination in a rather short time without stressing the body in any way. Furthermore, a significant quantity of medicaments can be saved.



### **Latest ultrasound technology**

High performance crystals produce the finest vapour with microscopic aerosol-particles. Vaporisation capacity amounts to 6,7 ml/minute, which is extremely high and therefore superior to all other appliances on the market.

### **Clear and functional design**

The electronic devices of the vaporizer are protected by a shatter-proof and water resistant body. The control-panel is absolutely easy to use. One simple button switches on and off. Any malfunction are securely displayed. The inhaler is very easy to clean because of its simple composition.

### **The mask**

The mask is transparent and carefully designed to guarantee a snug fit for all types of horses. On the upper side there is a soft and sealing silicone-rubber which can be replaced. The bottom leaves enough space for phlegm the horse might exhale. The fresh air supply is continuously variable and conveniently placed to the tube connection, providing the ideal mix of oxygen and medication.

### **The flexible tube**

The tube connecting the vaporizer and the mask is simply fitted on the respective sockets. Size and fittings are special. The sockets guarantee a proper fit, but will disconnect smoothly if the horse should panic.



## A ultrasound inhaler is setting new trends in the treatment of the respiratory ducts.

### Applying on the horse

Before starting the treatment with the inhaler, the horse should be fitted with a halter and tied up with two ropes at each side. The mask will fit over the nostrils gently and fixed with the head-piece that comes with the mask. Air supply valves must be fully opened to avoid a panic-reaction. Once the mask is secured, the tube is connected to the vaporizer and the mask.

### Convincing advantages:

- perfect atomisation
- ease of operation
- straight design
- splash proof
- shockproof body
- transparent mask
- wall mounting
- safety tested
- optimum disinfection achievable
- smallest particle size in continuous operation
- perfect fit
- special air supply
- easy to clean
- replaceable valves
- port security
- infinitely variable air supply
- special ventilation



## Pulmostat Liquid

**Now the inhalation is even more effective! Humid air protects the mucosa of the respiratory ducts. It reduces the irritation of the respiratory ducts by dusty air in the stable. With pleasant botanical extracts.**

### Pulmostat Liquid

Herbage water for the humidification of the breathing air. Thanks to the optimal inhalation with a ultrasound-inhaler, from now on we like to offer a new inhalation medication on the base of Pulmostat. The treatment of COB (RAO) is treated more intensively due to the special composition of Pulmostat Liquid.

### Composition:

Water, botanical extract (lady's finger, buckhorn plantain, salvia, watercress, icelandic bog, liquorice root and ivy), sodium chloride, potassium sorbate, citric acid

### Application advice:

1 x daily a mixture of 10/20 ml Pulmostat Liquid with 30/40 ml physiological saline solution and atomising it. The solution is also usable for atomisation with the help of ultrasound atomiser.



## Laser-Thermoscan

Lameness is one of the most common reasons for veterinary treatment for horses. Often, the actual cause is not discovered with conventional examination methods. The new Laser-Thermoscan can help in these cases! This handy appliance localizes infections without any pain for your horse.



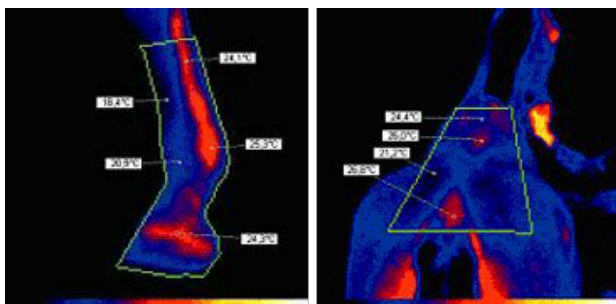
### **Laser-Thermoscan**

The Laser-Thermoscan can discover painful and inflammable processes within the horses body, because the body reacts with increased blood circulation around the respective area. This process produces a heat that will be measured by the Laser-Thermoscan with ultimate precision. A special measurement process gives in comparison to other conventional measurements precise measurement data. With an accuracy of 0,1% will the Thermoscan register even the slightest difference in temperature. For assessment of the result a comparing measurement should be taken on a non-infected part of the body.

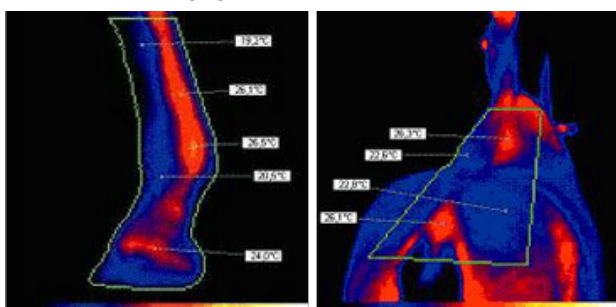
### **Advantages:**

- totally pain-free diagnosis of infectious diseases of all kinds
- precise localization of the infected part
- secure results
- quick initiation of the right treatment
- ergonomic design
- powered by 9V block battery
- clear display
- special Laser-Measurementprocess

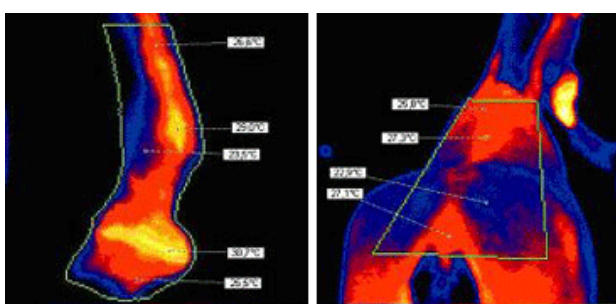
Measurement before work



Measurement during light work



Measurement after hard work



Laser-Thermoscans are highly sensitive appliances, reading the slightest differences in temperature. Therefore it is very important to eliminate potential erroneous measurements, for example by avoiding direct solar irradiation or any powerful artificial sources of heating. The closer the inflammation lies beneath the skin, the more distinct differences in temperature will be. It is important to scan healthy party for comparison, to insure proper judgement of the results. Once the centre or inflammation is localized, the measurements on border areas help to specify dispersion. The temperature of the lymphatic nodes an be analysed with this Laser-Thermoscan as well. Every lymphatic node increases radiation in a specific area when infection strikes. Therefore the Laser-Thermoscan can indicate hidden infections as well. The Laser-Thermoscan also guarantees exact measurements on hairy areas. For an additional assurance of the inflammation-diagnosis we recommend measurements before and after work. The measured result of the inflamed region will rise clearly. For inflammations of the horses hoof we recommend selective measurements. Measuring the hoof's wall and sole carefully will lead to proper indications of the inflammations position and dispersion.



## Horse control

### **Horse control**

A specialized halter that allows for complete monitoring of the horse. Its uncomplicated application and high comfort make it stand out. The accurate measurement procedure is based on the evaluation of the horse's heart rate, resistance and body temperature in connection with its behaviour of movements. The halter monitors all pain during the birthing process, during a colic or after an operation. It is possible to register up to eight halters at one station. The halter contains a battery and the corresponding station (with a range of 20 m) a power supply unit equipped with a SIM card. With it the alarm signal will be transferred to a mobile phone by call or text. The batteries as well as the measurements are constantly controlled.

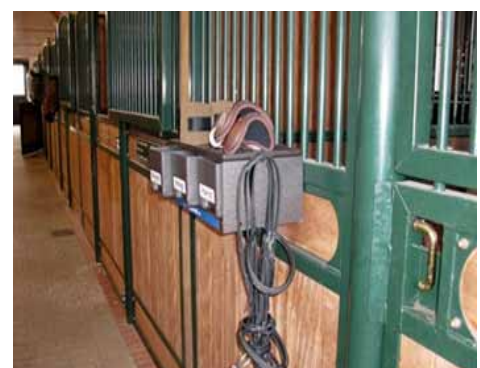


## Feed and Medication dispenser

### **Feed and medication dispenser**

This dispenser has a useful system containing of boxes for additional feed or medication. One box contains three gifts for one day! The box is stackable for multiple days and weeks. It is easy to assemble and a useful for storing

- feed and medication dispenser for several days
- the system has several dimensions according to contents
- modular system
- universal suspension and stackable
- additional feed dosage for one or several days beforehand



The feed and medication dispenser has three push fields to the portion of the every day gifts. The system allows an exact vote with the renter or feed master about additional giving of additional feed or drugs. The whole case is suspended to the respective stable, is screwed or stacked for several days. There is the feed and medication dispenser, according to contents form, in different dimensions. The case and the drawers exist of a breakproof material slightly to be cleaned. The feed dispenser are stackable for several days and to fasten on a rolling base. This guarantees an easy transport.



## Exago

### **Exago ultrasonic device**

is a portable ultrasonic scanner and convinces because of:

- good portability
- Autonomy
- high image quality
- wide-band probes
- intuitive user interface
- good equipment, e.g. standard equipped doppler

...for flexible and independent work!

01609.000

The Exago was developed in particular for application on horses, cows and for small animals and is designed with the latest technology. It can be used on a trolley in the surgery as well as in the stable. The 8.4 inch screen and the advanced image size allows the user reliable and fast diagnosis. Ultrasound images and video frequencies can be stored directly. The Exago is equipped with standardised connections so that there is the possibility of a bigger screen, a printer or an USB-stick.



The probes use the most advanced technology of piezoelectric composites, offering unequalled performances in band width. You will be able to select the optimal probe to optimise the details of observed tissues during the examination.

### **System specifications**

weight: 3250 g with battery, 8,4" screen, alphanumeric keyboard and touchpad, integrated loudspeaker, interchangeable battery, long autonomy (5,5 Std.), intuitive user interface

### **Imaging modes**

B, B/M - mode, CFM: Colour flow mapping, pulsed wave doppler (PW), zoom, cineloop, text and annotations, protocols, measurements and tables, storing clips and images

### **Clinical applications**

abdominal, gynaecology, tendons, obstetrics



## Imago

### Imago ultrasound scanner

portable ultrasonic scanner and convinces because of:

- extremely robust
- ultra-light
- high image quality
- wide band probes
- intuitive user interface, touchscreen
- diverse functions

...optimal to work in the stable!



01608.000

The Imago was developed in particular for application on cows, horses, pigs, sheep and goats. It is also suitable for small animals like dogs and cats. The weight is 1,8 kg with battery. Two probes can be stored in the case. The interchangeable battery allows the user a fast, reliable and accurate diagnosis. Ultrasound images and video frequencies can be stored directly. The Imago is equipped with standardised connections for a bigger screen, a printer or a USB-stick.



01608.110



01608.120



01608.130



01608.140

The probes use the most advanced technology of piezoelectric composites, offering unequalled performances in band width. You will be able to select the optimal probe to optimise the details of observed tissues during the examination.

### System specifications

Weight: 1800 g with battery, 6,5" screen, touchscreen, long autonomy, interchangeable battery, intuitive user interface, magnesium housing

### Imaging modes

B, B+B, B/M - mode, zoom, focus, cineloop, text and annotations, protocols, measurement and tables, storing clips and images, connection of peripherals

### Clinical applications

general, gynaecology, tendon, abdominal





## Exagyne

### **Exagyne ultrasound scanner**

is a portable ultrasound scanner of the premium class and convinces because of:

- compact and modern method of construction
- multifarious possibilities of investigations
- possibility to work 2 hours with battery
- digital data and image storage
- colour doppler

...for flexible and independent work!

01603.000

The Exagyne was developed in particular for application on small animals and is designed with the latest technology. The Exagyne weighs 7,5 kg and the interchangeable battery has the capacity for 2 hours of use. The 15" screen and the advanced image size allows the user a fast, reliable and accurate diagnosis. Ultrasound images and video frequencies can be stored directly. The Exagyne is equipped with standardised connections for a bigger screen, a printer or USB-stick.



The probes use the most advanced technology of piezoelectric composites, offering unequalled performances in band width. You will be able to select the optimal probe to optimise the details of observed tissues during the examination.

### **System specifications**

Weight: 7,5 kg with battery, 15" screen, powerful computer unit, patient-list and database, postprocessing of images and clips

### **Imaging modes**

B, B+B, B/M - mode,  
CW, PW, CFM, 4D-option, zoom,  
cineloop, CD/DVD-writer, 3 USB, DICOM, RJ45,  
VIDEO/DVI

### **Clinical applications**

abdominal, obstetrics, cardiology, synecology

## Accessories - Ultrasound units

### Height adjustable stool

Multifunctional scan stool, which is especially made for the examination of horses with the help of ultrasound units. The stool is adjustable on the different sitting positions for the different heights of examination areas, so that the investigating person can always sit in an optimal and ergonomic posture.

- easy to transport
- high-quality manufactured
- easy to assemble
- great stability in every sitting position
- 4 different heights of sitting possible
- enables maximum free moving space within a comfortable posture

...facilitates the examination of horses!

### Data and facts:

- Transport position: Ø 40 x 23 cm  
Total weight: 9,3 kg  
5 castor wheels, 2 wheels come with locking
- Position 1: 23 cm high, for scanning the foot and lower parts of the leg
- Position 2: 38 cm high, improves the examination with ultrasound devices at the front knee and middle parts of the leg of the horse
- Position 3: 51 cm high, enables the fast examination of the stifle and higher parts of the leg
- Position 4: 63 - 75 cm high, realised with an optional height extension, this extra extension can easily be put under the seat, this height is in general for the examination of the upper part of the body of the horse



Position 1



Position 2



Position 3



Position 4



Transport position

## Accessories - Ultrasound units

### **Adjustable lightweight aluminium stand**

Foldable stand, which improves especially the working with ultrasound units by having the possibility to adjust the stand to the optimal working height for the examination at the horse. The investigating person has more free moving space, because he do not have to hold the ultrasound unit additionally. Furthermore, there can be also put further accessories on the stand.



Position 1



Position 2



Position 3



Position 4



Professional probe rack (optional)



Transport position

- easy to transport
- high-quality manufactured
- very easy to adjust
- great stability
- 4 different working heights
- guarantees great mobility

...for flexible and independent work!

### **Data and facts:**

- Transport position: 58 x 41 x 26 cm  
Plateau size: 55 x 37,5 cm  
Total weight: 12,5 kg  
Maximum load: 15 kg  
4 castor wheels with locking (Ø 80 mm)
- Position 1: 25 cm high, for imaging the foot and pastern
- Position 2: 42 cm high, facilitates the examination with ultrasound units at the forelimbs and hind limbs
- Position 3: 77 cm high, enables the fast examination of the stifle and the upper part of the leg of the horse
- Position 4: 112 cm high, this position is for the examination of the hip, sacrum, back, neck and endo-rectal area very helpful

## **PrO-Vet Multi-Centrifuge**

**Multi-Centrifuge as special edition for horses. Centrifuges for the veterinarian. Designed by engineers and veterinary practitioners.**

The PrO-Equine centrifuge is especially developed for horse-veterinarians. Mainly, it could be used for artificial insemination for horse spemen, embryo-transfer, as well as for the control of faeces and of blood.

### **Standard features:**

- stainless steel bowl - cleanliness and rust free
- alloy and steel main frame with composite panels - strong, light and quiet
- world brand leading industrial grade inverter - reliability and accuracy
- high quality European brushless motor - quiet, cool and reliable
- high-tech-ventilation (environmental air ventilation model) - works with a small development of heat
- all centrifuges have user friendly interfaces to have access to all security parameters

### **Technical features:**

- Dimensions: 275 mm (H) x 325 mm (W) x 470 mm (D)
- Weight: 21,8 kg
- Power: 125 Watt
- Rotor: BRK5505 with swing out rotor
- Speed: 500 - 4.000 U/min
- RFC: 2.200 G
- Memory: 10 programmes

### **Swing out rotor: BRK5505**

- rotor type: 4 x 100 ml swing out rotor
- maximum test tube size: 45 x 100 mm
- maximum radius: 12,3 cm
- test tube angle: 0
- speeding up time: 25 sec.
- lag time: 25 sec.
- autoclavable (frequency): 121°C (20)

On request: We also offer numerous types and sizes of vacutainer, monofetts and micros - Please contact us for further information!



### **Safety features:**

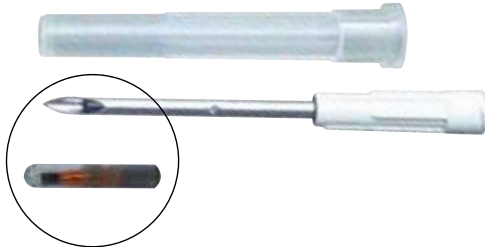
- multi-point Lid locking system - best safety for lid
- emergency release - could be open, even with a blackout of the electrical power supply
- lid with gas springs - avoids accidentally dropping of the lid
- lid lock detector - unable to run with an open lid
- imbalance vibration detector with auto reset - easy "eye" volume loading
- overspeed sensor - safe detection of speed
- Set Inverter values - electronic safety of speed
- Barrier Ring - metal protection of chamber
- Motor overheat sensor - motor and samples protection

### **User function:**

- 4 separate LED programme identification - good overview and easy handling
- number of revolutions per programme preset - useful support
- Speeding up and braking time preset - avoid deposits
- 4 programmes for usability
- time of programmes preset
- noise < 60 dB - very quiet

## Transponder

- For the electronic identification of horses



### **ISO-Transponder**

Singly packed ready for use, with a sterile injection needle (ISO11784/85), the needle has a double bevel cut which helps minimise tissue damage made of glass the transponder is coated with parylene covering which helps to stop the transponder from migrating, approx. Ø 2,2 x 12 mm

73251.000



### **Injector**

Single-use injector for ISO-Transponder (ISO 11784/85), in handy pistol shape

73301.000



### **Muto-Injector**

Reusable injector for implanting of ISO-transponders, 12 cm wide and 14 cm high, 380 g, chrome-plated, balanced, robust and durable, the ergonomic shape of the handle reduces operator fatigue during many applications

73310.000



### **Single-use injector**

Supplied with the transponder (ISO 11784/85) is designed for small animals, the glass transponder, and injector are ready for immediate single use, Ø 2,2 x 12 mm

73260.000

with Ø 1,4 x 8 mm transponder

73262.000



## **Reader**

### **Royal Tag Reader**

Handheld reader is conform to ISO-standard and reads all transponders according to ISO. The ergonomic and light construction of the reader facilitates the handling of the reader!

- FDX-A, FDX-B und HDX
- Colour display 1"
- Dimensions: 110 x 220 x 48 mm
- Weight: 240 g
- USB Interface Plug and Play, cable
- No additional software necessary for downloading the data on the computer
- Flash memory over 2.000 numbers
- Maintenance of the reading field: 15 sec.



73337.000



**Optional extension for animals which cause problems (especially for cats and dogs):**

#### **Extension handle**

65 cm long, for the extension of the Royal Tag reader

06096.000



**Please visit our website**

**[www.hauptner-herberholz.de](http://www.hauptner-herberholz.de)**

## Reader

### **ISO Max**

The reader conforms to ISO-standard 11784/85. It reads all transponder following the ISO-standard (FDX-B und HDX) and it is compatible with all transponder types currently available on the market (FDX-A/FECAVA/Trovan)

73330.000



The reader works with safe low frequency radio waves. It reads through nearly every conductive material. The maintenance of a 15 seconds constant reading field facilitates the finding of the transponder. The identification of the microchip code will be confirmed by an acoustical signal. Up to 2.000 transponder codes can be stored and transferred with a cable for data transfer (USB: optional with serial interface) to a computer. The menu options of the reader offers a lot of options for example searching for a selected animal code in a certain group of animals. The reader is fully prepared for the future ISO standards (writable transponder, sensor transponder, authentication transponder). It is delivered in a practical suitcase, which includes the battery recharger and the operation manual.

- Optimised reading distance and speed with DSP technology
- Providing a high quality product
- Lightweight (450 g), ergonomic shape
- LCD Display with backlight
- Fast rechargeable battery: 2 hours
- Friendly user interface with improved menu setting
- Possibility to record date and time with ID Code
- Dimensions: 33 x 16 x 4 cm

### **Technical characteristics**

Dimensions: 33 x 16 x 4 cm, weight: 450 g, storage temperature: from 0°C to +40°C, operating temperature: 0°C to +40°C, power supply: 12 V Li-ion type battery, battery recharger: 230 V AC on 15 V DC/1A (3 hours), transmission frequency: 134,2 KHz

## Reader

### APR500

- The robust, communicative and portable solution -  
The portable ISO RFID reader APR500 offers an alphanumeric keypad, a graphical display, a large memory and great connectivity in a very robust and ergonomic IP 64 housing. Due to the handy design and the pocket size of its robust IP 64 case the reader is very comfortable even under worse conditions. The ergonomic, alphanumeric keypad and the big graphical display as well as the soft keys enable an easy handling. The memory capacity with up to 6.000 IDs is sufficient for one working day. Even in the case of a battery defect the collected data is saved. USB, RS232 and Bluetooth as standard interface, and optional modules for GPRS or WiFi allow a flexible and wireless communication.

73335.000



### Advantages of APR500:

- the APR500 reader is compatible to the ISO standard 11784/5 and reads HDX and FDX-B transponder with a very good reading range
- Animal or herd numbers can be displayed instead of electronic IDs. With the ASSIGN function the animal or herd number can be connected with the electronic ID on site
- the two reading keys (HOTKEYS) of the APR500 are individually programmable. With pressing one of these buttons an abbreviated instruction can be started
- in the TASK mode user defined sequences of actions or commands are possible. The tasks consist of several loops (e.g. at lambing or loading) and lists (e.g. medicines). The creation of the tasks with the TASKTOOL software is very simple
- the large backlit graphic LCD can display up to 5 x 20 characters and various languages are possible
- An ergonomic mobile phone style keyboard with 21 keys ensures easy and comfortable operation
- the APR500 can be used with an external stick antenna, which allows one-hand operation
- the APR500 can use USB for the data exchange and for charging the rechargeable battery. For this the USB cable and the optional docking station are usable
- the class 1 Bluetooth module offers a wireless communication within 100 m
- with the optional GPRS or WiFi modules it offers state of the art wireless data communication
- for convenient power management the AA type batteries can be replaced easily by standard cells or with the optional available rechargeable (via USB) NiMH cells
- the APR500 can collect weighing data from major brand scales via RS232 or Bluetooth and save them with the ID

- Dimensions: L x W x H: 175 x 92 x 40 mm
- Weight: approx. 350 g
- Temperature range: -10°C to 60°C
- Frequency: 134,2 KHz
- Reading range:
  - approx. 25 cm with HDX transponder Ø 30 mm
  - approx. 20 cm mit FDX-B transponder Ø 30 mm
- Power supply: 2x 1,2 V NiMH batteries
- Interfaces:
  - USB with the APC500 cable or via optional docking station ADS500
  - RS232 using the APC510 cable
  - plug for external antenna
  - Bluetooth class 1 module (Master capable)
  - optional: GPRS or WiFi

# Terms and Conditions of Delivery and Payment

## I. Scope of validity

1. The following terms and conditions of delivery and payment shall apply for all deliveries, performances and offers. In the event that our customer's terms of purchase differ from these, they shall only apply if they have been approved explicitly by us in writing. Acceptance of the goods supplied by us is deemed as acceptance of our terms and conditions.
2. We reserve the unrestricted rights of ownership and copyright utilisation in respect of price quotes, drawings and other documents; they may only be made accessible to third parties upon prior written approval by us.
3. Subsidiary agreements shall only apply if they have been confirmed in writing.

## II. Prices

Our prices are fundamentally ex works plus postage and packing if no other terms of delivery have been agreed. Prices quoted apply fundamentally without insurance. Confirmed prices are based upon the current costs of materials and wages and salaries at the time of order acceptance. We reserve the right to charge those prices that apply on the basis of the current costs of materials and wages and salaries at the time of delivery. Prices are deemed to apply for one item or for the specified quantity plus value-added tax (VAT) at the current rate on the date of delivery. Reductions in remuneration are specified in our current framework agreement and terms and conditions.

## III. Delivery

1. We undertake delivery on behalf of the purchaser with due care and attention, however, we only accept liability for wilful intent and gross negligence. The right of choice of appropriate method of transport also remains with us.
2. Delivery dates shall only apply if they have been confirmed explicitly by us. If the contract has been agreed in writing, confirmation of the delivery date must also be in writing.
3. An appropriate extension to the delivery date must be granted if we are late with a delivery/performance. The purchaser may only withdraw from the contract if the extension to the delivery date expires without effective result. Section 361 BGB remains unaffected in this respect. The delivery deadline commences with the date of despatch of the order confirmation and is deemed to have been observed if the goods have left the works by the end of the delivery period or notification has been given that the goods are ready for despatch. Damages for delay may only be claimed up to the extent of the order value unless the delay was caused by us by wilful intent or gross negligence.
4. Operational disruptions, whether within our business or in that of a supplier, as a result of war, strike, lack of energy, failure of transport means, work restrictions or force majeure, are grounds for exemption from adherence to the agreed delivery deadlines but not for termination of the contractual relationship.
5. The costs for packing and bulk freight will be charged separately insofar as the goods being transported consist of bulky items.
6. Despatch by express freight is fundamentally freight forward.
7. Goods ordered on call ("call-off stock") are to be taken over within the agreed period. If the complete quantity has not been called, remaining amounts which have not yet been called will be despatched to the customer at the end of the agreed period.

## IV. Complaints

1. The guarantee period for production and material faults is 1 year and commences with the day of delivery.
2. Complaints are only permitted within 10 days of receipt of the goods. Claims for hidden defects that cannot be found upon immediate examination may only be made against us if the defect complaint is received by us within 6 months of the goods having left the factory.
3. In the event of justified complaints, we are obliged at our discretion and under exclusion of other claims to rectify the defect and/or provide a replacement delivery, namely to the extent of the order value, unless an assured characteristic or feature is missing or we or our vicarious agents are guilty of wilful intent or gross negligence. The same shall apply in the event of a justified complaint for rectification of the defect or replacement delivery. The purchaser may withdraw from the contract in the event of omitted or faulty rectification or replacement delivery. Liability for subsequent damage resulting from defects remains excluded unless we or our vicarious agents are guilty of wilful intent or gross negligence.
4. In the event of dissatisfaction, the goods may be returned within 10 days insofar as they are still unused. Other than this, goods may only be returned with our explicit agreement. Custom-made items (e.g. embossing in ear tags) are fundamentally excluded from returns.

## V. Payment

1. Deliveries are made fundamentally per cash on delivery or cash in advance unless other delivery terms have been agreed.
2. In the case of sales on invoice, payment is to be made without deduction within 30 days of the invoice date.
3. In the event of overdue payment, default interest shall be payable at the regular interest rate for overdraft facilities. This does not exclude/preclude the assertion of further default damages.
4. The purchaser may only offset or assert a right of retention against our claims if the purchaser's claim is contested or a legally binding title exists.

5. The goods remain our property until complete payment of all demands including any future arising demands. Insofar as the goods are being processed or reworked by the Purchaser, we shall be deemed to be manufacturer pursuant to Section 950 BGB and acquire ownership of the intermediate or end product. The processor is only custodian.

In the event of the reserved goods being combined or processed with other goods not belonging to us, we shall acquire co-ownership of the new item in a ratio of the reserved goods to the other items.

The goods may only be sold in the course of normal and ordinary business transactions and only if claims arising from their resale have not been assigned to third parties beforehand.

Upon signing the purchase agreement with us, claims attributable to the purchaser from the re-sale are deemed to be assigned to us inasmuch and insofar as our goods have been combined or processed with other items. In this case the assigned claims serve as security for us only to the extent of the value of the respective sold reserved item. We will not collect the assigned claim as long as the purchaser fulfils its payment obligations. The purchaser, however, is obliged upon demand to name us the third-party debtors and to notify them of the claim assignment.

6. Pledges or security transfers of the reserved goods or the assigned claims are not permitted. The purchaser shall notify us immediately of any action by third parties in respect of the goods supplied under reservation of ownership or in respect of the assigned claims.

7. If, in the event of delivery abroad, the above agreed reservation of ownership is not permissible with the same effect as under German law, the goods shall remain our property until payment of all our claims from the contractual relationship arising from the sale of the goods and services. If this reservation of ownership is not permissible either with the same effect as under German law, whereas the reservation of other rights to the goods is permissible, we shall be entitled to exercise all such rights. The purchaser is obliged to assist with any measures implemented by us to protect our right of ownership or, in its place, any other rights to the goods.

## VI. Impossibility of performances

If a service or supply incumbent upon us becomes impossible, the fundamental legal principles shall apply subject to the following condition: If impossibility is the result of a fault on our part, the purchaser shall be entitled to demand compensation. The claim for damages by the purchaser, however, shall be restricted to 10 percent of the value of that part of the delivery or performance which cannot be put into suitable operation because of the impossibility. Claims for damages by the purchaser which exceed the aforementioned limit are excluded. This shall not apply, however, insofar as mandatory liability exists in cases of wilful intent or gross negligence. The purchaser's right to withdraw from the contract remains unaffected.

## VII. Place of fulfilment, court of jurisdiction, validity

1. Our company headquarters shall be the place of fulfilment and court of jurisdiction for all claims and legal disputes including those in respect of bills and documents arising from the contractual relationship. Nevertheless, we reserve the right to take legal action at the company headquarters or domicile of the purchaser.
2. In the event that the purchaser is not a fully qualified merchant as defined by the HGB, the location of our company headquarters shall be deemed as agreed as court of jurisdiction for the payment order procedure.
3. The invalidity of one or more provisions hereto shall have no effect on the remaining provisions.
4. Exclusively German law shall apply to all legal relationships arising as a result of the purchase agreement.

## VIII. Data protection

In placing an order, purchasers agree to EDP evaluation of the data contained in their order insofar as this is necessary for order handling and in compliance with existing legislation.

## IX. Packaging Ordinance

We will take back used transport packaging of our company for material recycling or disposal insofar as it is returned to us free-of-charge and in a well-sorted condition. An easier possibility is now provided by the recently created recycling companies which are members of the RESY association and which dispose of all packaging materials which have the RESY mark. Upon request, we will be pleased to provide the address of such a company located in the purchaser's vicinity.

## X. Technical alterations

We reserve the right to undertake alterations to our products in the interest of technical progress.

## H. Hauptner und Richard Herberholz GmbH & Co. KG

Animal identification · Stock Breeding equipment · Veterinary instruments  
Postfach 22 01 34 · D-42629 Solingen  
Kuller Strasse 38 – 44 · D-42651 Solingen  
Tel.: +49(0)212/2501-0 · Fax: +49(0)212/2501-150





**H. Hauptner und Richard Herberholz GmbH & Co. KG**

**Animal identification - Stock Breeding equipment -  
Veterinary instruments**

**Kuller Str. 38 - 44, 42651 Solingen, Germany**

**P.O. Box 220134, 42629 Solingen**

**Tel.: 0049 (0) 212 / 250 1 - 0**

**Fax: 0049 (0) 212 / 250 1 - 150**

**[www.hauptner-herberholz.de](http://www.hauptner-herberholz.de)**

**[verkauf@hauptner-herberholz.de](mailto:verkauf@hauptner-herberholz.de)**